

A two-story brick house with a red tiled roof, dormer windows, and a large front lawn. The house has a traditional design with a chimney on the roof. The front garden is well-maintained with a green lawn and some shrubs. The sky is blue with some clouds.

# Howard Morley & Sons

PER MONTH

**£5,000 Per Month**

**High Street Green**

Chiddingfold, GU8 4YB



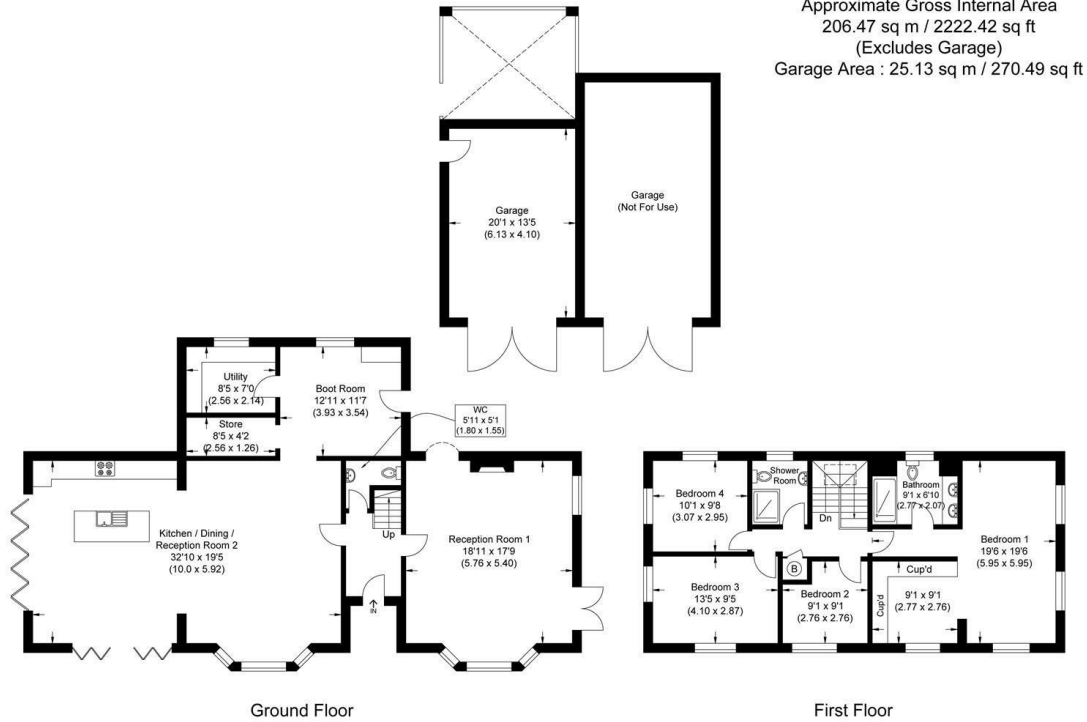
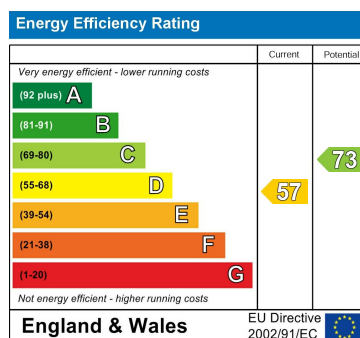


Illustration for identification purposes only, measurements are approximate, not to scale.



Agents Note: Whilst every care has been taken to prepare these particulars, they are for guidance purposes only. All measurements are approximate and are for general guidance purposes only and whilst every care has been taken to ensure their accuracy, they should not be relied upon and potential buyers/tenants are advised to recheck the measurements

Howard Morley  
& Sons

OFFICE ADDRESS  
276 High Street  
Guildford  
Surrey  
GU1 3JL

OFFICE DETAILS  
01483 575 304  
lettings@hmorley.co.uk  
hmorley.co.uk